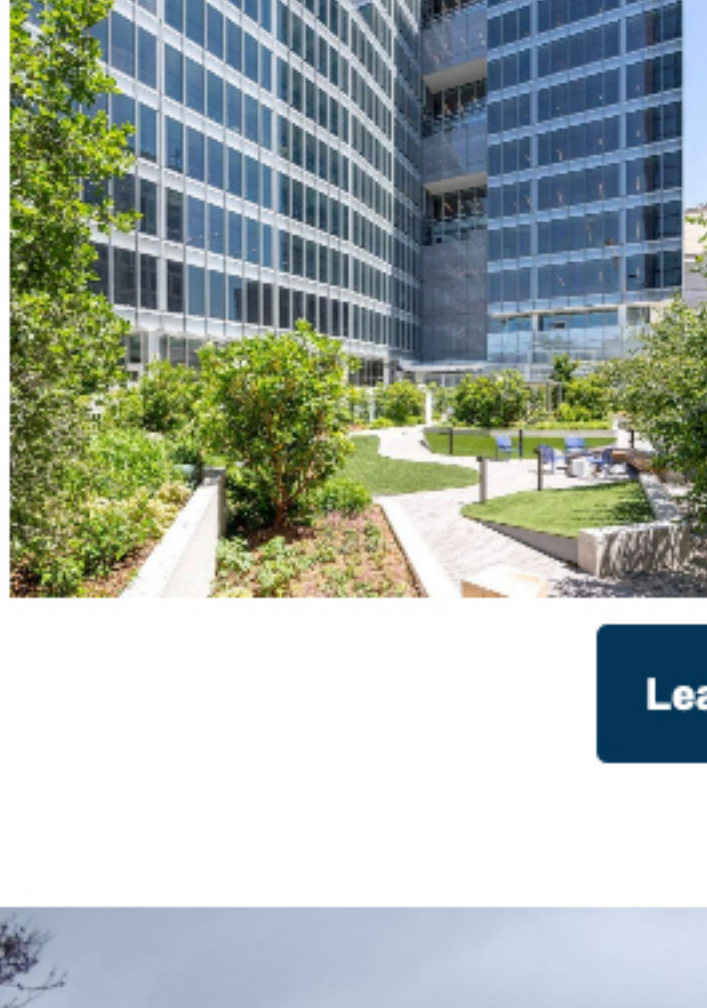




December
2021

49 S. Van Ness Earns Coveted Architecture Awards



49 S. Van Ness, a joint venture with the City and County of San Francisco, and the new home of the City's Offices and Consolidated Permit Center, is the recipient of the 2021 Leading Edge Award given by the AIA California. The prestigious award recognizes design excellence, sustainability, resiliency and social impact. 49 S. Van Ness was also awarded an Architecture Merit Award from AIA San Francisco for their partnership and innovative design. The development was planned and developed by Related California concurrently with 1500 Mission, a 550-unit mixed-income apartment tower, designed by Skidmore, Owings & Merrill.

[Learn More](#)



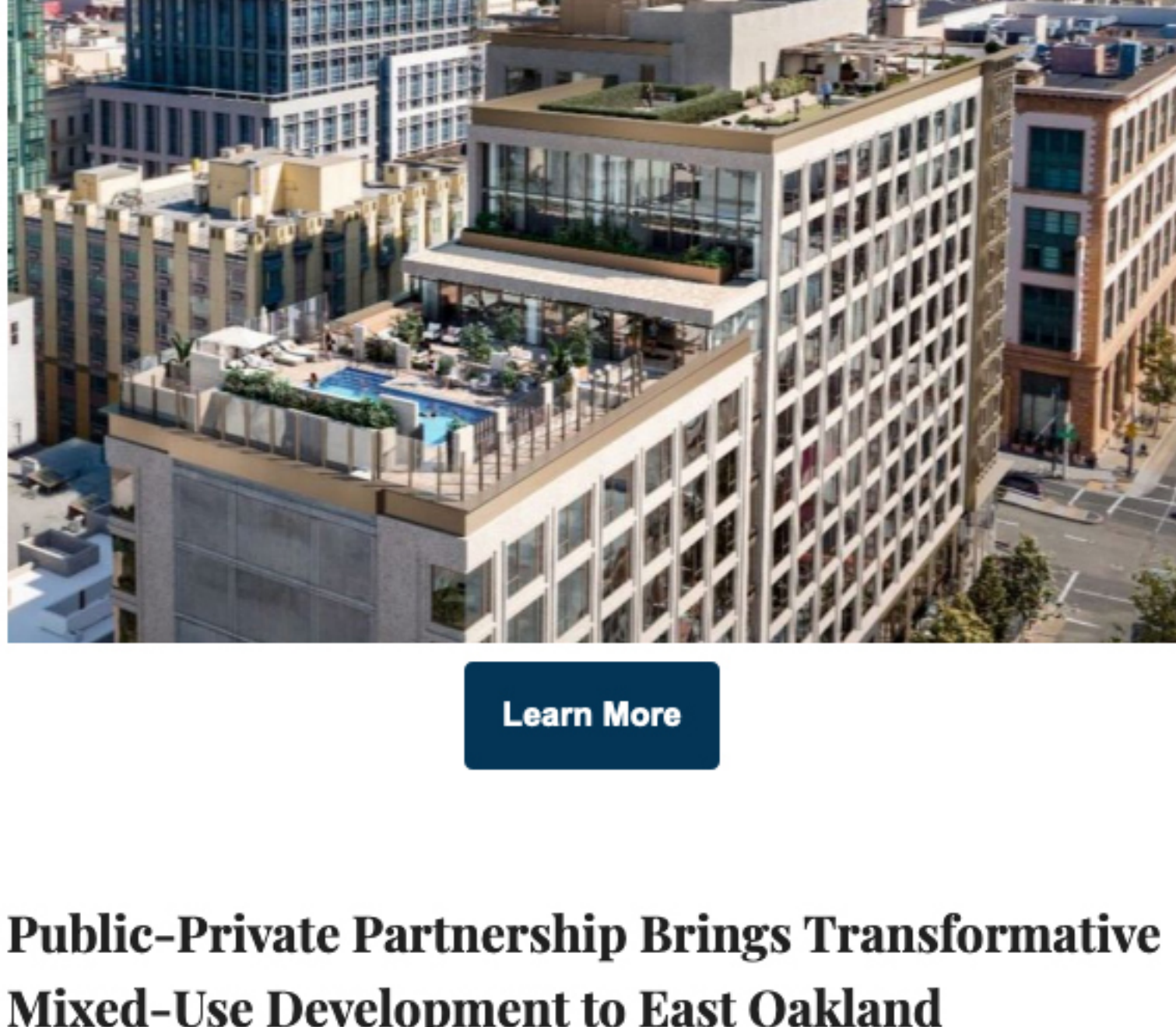
Related California, Mission Housing and Civic Leaders Break Ground on 131 Units of Affordable Housing at Balboa Park Upper Yard

When construction concludes in 2023, this affordable, mixed-use, transit-oriented development will feature 131 apartments for low and very low-income families, a licensed early childhood education center with outdoor activity area operated by the YMCA, a family resource center, and a revamped BART station plaza. Thirty-nine apartments will be set aside for existing HOPE SF residents relocating from the Sunnydale-Velasco public housing site. Related California and Mission Housing Development Corporation were selected by the Mayor's Office of Housing and Community Development to develop, own and operate the site.

[View Video](#)

Coterie Cathedral Hill in San Francisco: Luxury Senior Living

Related California and Atria Senior Living have joined together to form Coterie, where luxury, wellness, and concierge-level services merge into a singular lifestyle, with developments in San Francisco and New York. Coterie Cathedral Hill in San Francisco is a 208-unit luxury senior development with onsite amenities that will include private healthcare facilities with treatment and diagnostic capabilities, fitness centers curated by Mayo Clinic, a movie theater, 5 dining venues featuring seasonal menus and tailored nutrition, outdoor heated pool, rooftop garden and lounges, and engaging programs. Coterie Cathedral Hill is now leasing with move-ins slated for March 2022.



[Learn More](#)

Public-Private Partnership Brings Transformative Mixed-Use Development to East Oakland



Located at the corner of International Boulevard and 94th Avenue, 95th & International will yield 55, new affordable apartments with a community-serving health clinic on the ground floor, operated by La Clinica de La Raza, bringing affordable health care to the community and continued promise along the International Boulevard Corridor. This new development joins the \$30 million, 59-unit affordable complex, Acts Cyrene Apartments, completed in 2017. Planning for this development began over a decade ago under the leadership of Acts Community Development Corporation. Since that time, an extensive public-private partnership has grown to include Related California, the City of Oakland, Oakland Housing Authority, Strategic Growth Council and California Department of Conservation. Anticipated completion is Fall 2022.

[View Video](#)



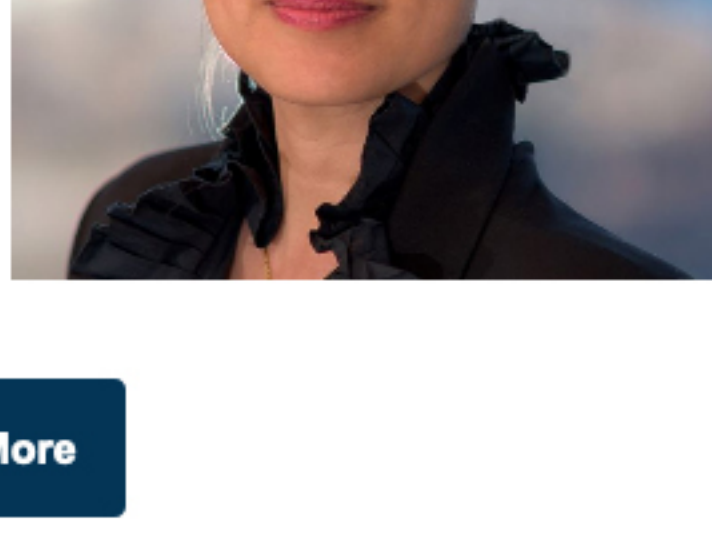
Related California Receives More than \$13 Million in Funding For Much-Needed Affordable Housing

Three Related California affordable housing developments have been awarded roughly \$13 million in competitive Infill Infrastructure Grant (IIG) funds. This critical financing, awarded by the California Department of Housing and Community Development, will provide pivotal funds for the creation of more than 600 units of much-needed affordable housing in South Lake Tahoe, San Diego and Los Angeles. The 248-unit development in South Lake Tahoe is slated to begin construction in 2023.

[Learn More](#)

Related California's Phoebe Yee Talks to Madame Architect

Related California's Phoebe Yee, Senior Vice President of Design, discusses her career, the perspectives she's gained working on both sides of the architect-developer relationship, and her role leading architecture and interior design for all Related California's market rate and mixed-income residential developments.



[Learn More](#)



Los Angeles Leaders, HACLA and Related California Break Ground to Double the Size of Rose Hill Courts Public Housing Development

Built in 1942, Rose Hill Courts is one of LA's oldest public housing complexes. The new complex, being built in two phases, will feature 185, affordable apartments for low, very low and extremely low-income families. When fully built out, the redeveloped site will include nine buildings, a 6,000 square foot management office and community building, and a 'central park' green space. Both phases include parking, new landscaping, lighting, fencing, security features, and storm drain and utility improvements.

[Learn More](#)



Copyright © 2021 Related California, All rights reserved.

Related California Offices

SAN FRANCISCO
44 Montgomery, Ste 1300, San Francisco, CA 94104
T: 415.677.9000 | F: 888.371.8739

LOS ANGELES
333 South Grand Ave., Ste 4450, Los Angeles, CA 90071
T: 213.984.4110 | F: 213.625.1918

IRVINE
18201 Von Karman Ave., Ste 900, Irvine, CA 92612
T: 949.660.7272 | F: 949.660.7273

Want to change how you receive these emails?
You can [update your preferences](#) or [unsubscribe from this list](#).