

HISTORIC VOTE PAVES WAY FOR RELATED CALIFORNIA AND MERCY HOUSING TO CREATE MIXED-INCOME HOUSING

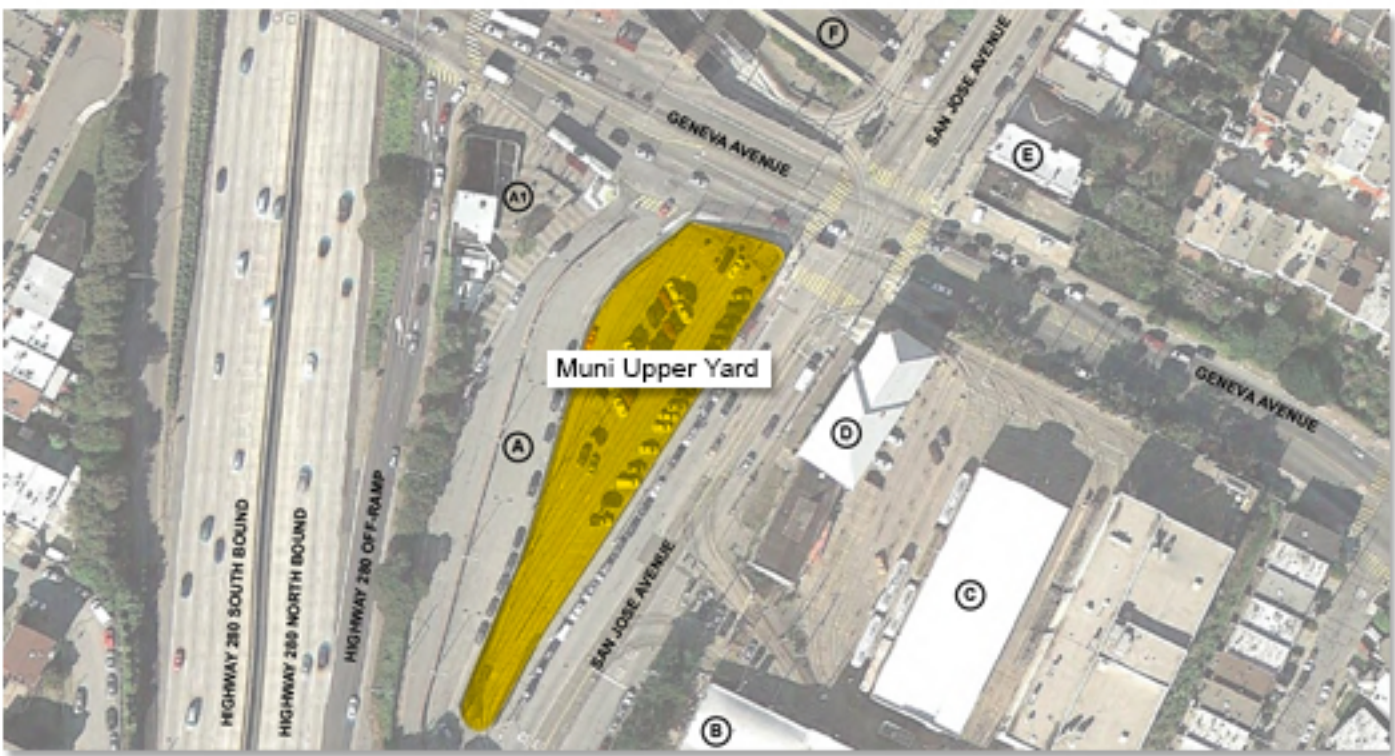


Master Plan View Looking West

The San Francisco Board of Supervisors’ historic vote authorized the transformation of dilapidated public housing in Sunnydale in San Francisco and paves the way for the partnership of Related California and Mercy Housing to transform 778 public housing units with up to 1,700 mixed-income housing, ranging from very low to market rate.

Part of the City’s HOPE SF neighborhood transformation initiative, when completed, the re-envisioned Sunnydale will be a mixed-income, service-enriched community affordable to low-income and middle-class families. Sunnydale will be funded with a combination of federal affordable housing tax credits, tax-exempt bonds and public subsidies, and will include the development of new roadways, sidewalks, transit connections and utilities in a regular street grid pattern that will reconnect the community with surrounding neighborhoods for the first time ever. ▶

RELATED WINS DEVELOPMENT RIGHTS FOR AFFORDABLE HOUSING IN SAN FRANCISCO



Muni Upper Yard Aerial

The Mayor’s Office of Housing and Community Development (MOHCD) awarded Related California and Mission Housing Development Corporation the development rights for 90 units of affordable and supportive housing in San Francisco’s Excelsior neighborhood, one component of a new, transit-oriented, mixed-use development located on 1.8 acres of City-owned and BART-owned parcels. Related is currently working with Caritas Management Corporation, Falcone Development Services, Instituto Familiar del La Raza, Jamestown Community, YMCA and Lutheran Social Services to provide community space and services. ▶

CITY OF SUNNYVALE SELECTS RELATED FOR PARTNER ON AFFORDABLE HOUSING



Sunnyvale Exterior Rendering

The City of Sunnyvale selected the partnership of Related and Affordable Housing Access (AHA) to develop a 92-unit, affordable, mixed-use development with 5,000 square feet of commercial space located on a 1.4 acre City-owned site at the corner of Mathilda and Iowa Avenues near the city’s downtown. Of the 92 units, 23 will be reserved for the developmentally disabled, 45 for low-income individuals and families and 23 for extremely low-income and Section 8 tenants. Housing Choices Coalition will provide onsite social services. This will continue a now 12-year history of partnership between Related and AHA as they continue to create quality affordable housing throughout California. ▶

RELATED CALIFORNIA OFFICES

IRVINE
18201 Von Karman Ave., Ste. 900
Irvine, CA 92612
T 949.860.7272
F 949.860 7273

SAN FRANCISCO
44 Montgomery, Ste. 1300
San Francisco, CA 94104
T 415.677.9000
F 888.371.8739

LOS ANGELES
333 South Grand Ave., Ste. 3550
Los Angeles, CA 90004
T 213.984.4110
F 213.625.1918